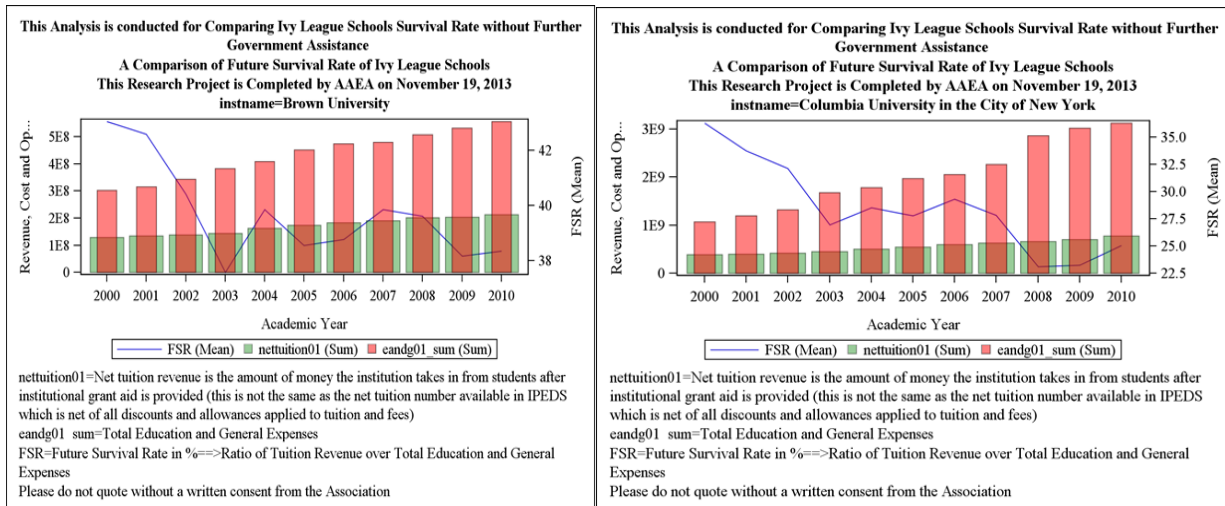


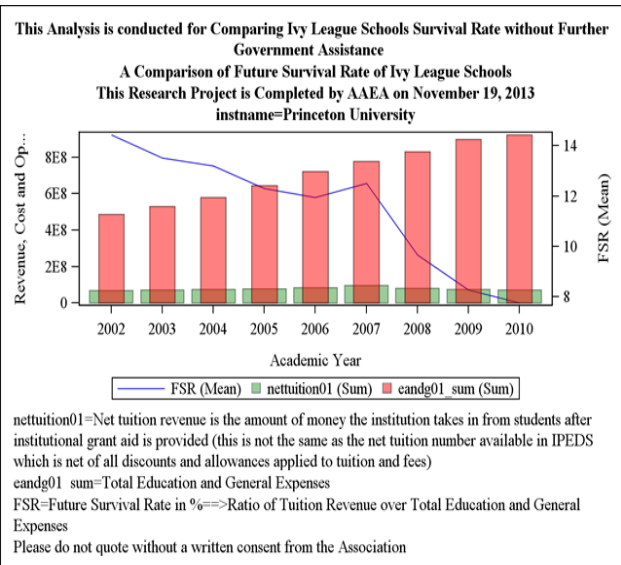
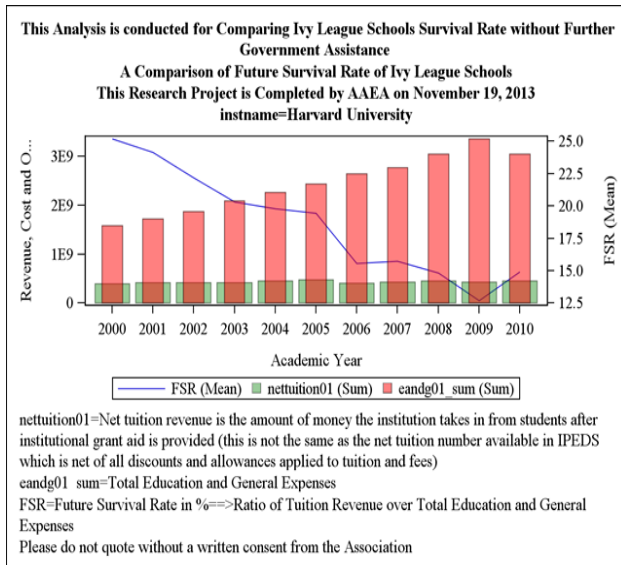
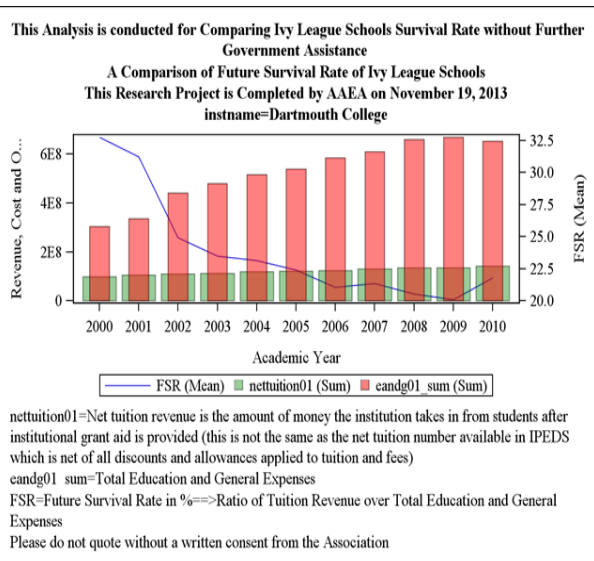
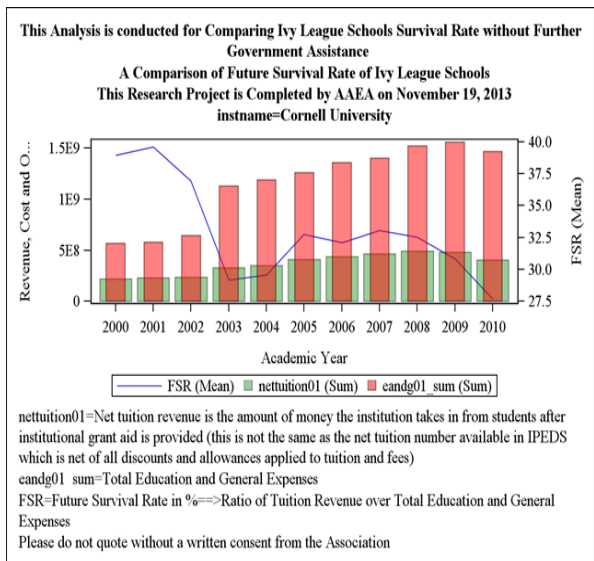
Future Survival Rate (FSR) of Ivy League Schools

By: Harry Djunaidi and Monica Djunaidi¹

Starting on November 18, 2013, the Association of American Education Analytics (AAEA) will share its research finding on future survival rate (FSR) of US Colleges. It will start with the Ivy League schools. The rate is calculated by comparing net tuition revenue after institutional grant aids and total general and education expenses (please see footnote on each figure). Lower FSR reflects a lower survival rate and vice versa. Except for UPenn, it is truly amazing to see that all of them have one thing in common in that the FSR has decreased tremendously in the last 10 years. Harvard recently announced and admitted the financial challenges that the school is facing. By looking at these graphs, one may not be so surprised to learn Harvard's \$34 million budget deficit. Examining and analyzing the graphs below, will it suggest that other Ivy League schools are facing the same problem as that of Harvard's?

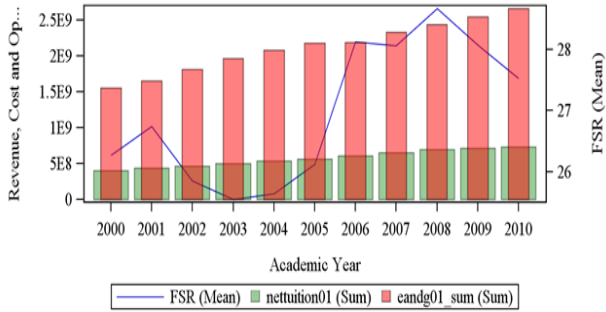


¹Founder and Co-founder Association of American Education Analytics. Please do not distribute without a written consent from the Association. Contact at harry.djunaidi@IRIntelligence.org



This Analysis is conducted for Comparing Ivy League Schools Survival Rate without Further Government Assistance

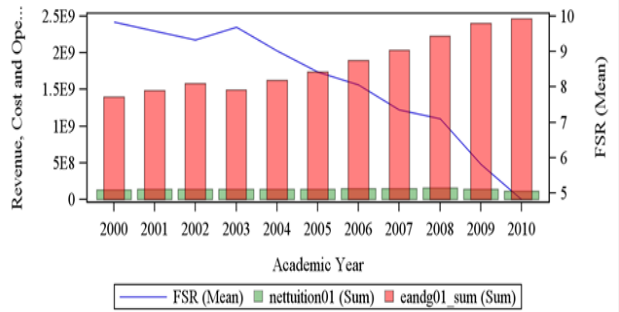
A Comparison of Future Survival Rate of Ivy League Schools
 This Research Project is Completed by AAEA on November 19, 2013
 instname=University of Pennsylvania



nettuition01=Net tuition revenue is the amount of money the institution takes in from students after institutional grant aid is provided (this is not the same as the net tuition number available in IPEDS which is net of all discounts and allowances applied to tuition and fees)
 candg01 sum=Total Education and General Expenses
 FSR=Future Survival Rate in %=>Ratio of Tuition Revenue over Total Education and General Expenses
 Please do not quote without a written consent from the Association

This Analysis is conducted for Comparing Ivy League Schools Survival Rate without Further Government Assistance

A Comparison of Future Survival Rate of Ivy League Schools
 This Research Project is Completed by AAEA on November 19, 2013
 instname=Yale University



nettuition01=Net tuition revenue is the amount of money the institution takes in from students after institutional grant aid is provided (this is not the same as the net tuition number available in IPEDS which is net of all discounts and allowances applied to tuition and fees)
 candg01 sum=Total Education and General Expenses
 FSR=Future Survival Rate in %=>Ratio of Tuition Revenue over Total Education and General Expenses
 Please do not quote without a written consent from the Association